

BURTON NEWS

THE VILLAGE NEWSLETTER

July 2026 Issue 370

£1 where sold



CONTENTS

Editorial	2-3
Society Reports	4-5
News from the Hall	6-7
Swift report	9
Sports Reports	10-11
Parish Council	12
School report	14
Vicar's Letter	16-17
Church Services	18
It's a Date in Burton	19
Club Information	22-23

BURTON NEWS

Please send us your letters - articles - events - news - stories - recipes etc for publication

Send by e-mail to

burtonnewseditor@gmail.com

burtonnewsyouthrep@gmail.com

Follow us on Facebook and Instagram

burt.onnews (Instagram)

Next Editorial Committee Meeting

Tues 21st July 7.00pm BMH

LAST DATE FOR COPY

23rd July for August issue

Burton News Information

Editor: Stuart East

Treasurer: Margaret Carr

Secretary: Maura Dooré

Distribution Mgrs:

Jane Hornsby and Jan Abbott

burtonnewsdistribution@gmail.com

Editorial Committee Members:

Joan Barkley

Kath Hayhurst

Lesley Gill

Annette Sayers

Burton News is published monthly between February and December (11 issues p.a.) and distributed by a team of volunteers. **Online version:**

www.burtonnews.org.uk

or our Facebook Page 'Burton News'

Contact the Editor via email:

burtonnewseditor@gmail.com

EDITORIAL

Welcome to your July issue of Burton News. Summer is finally properly with us. We hope you are enjoying the good weather, and hopefully we get lovely weather to enjoy throughout the summer months. There is lots to enjoy in this issue. We have all of our regular contributors and articles, with many events going on again this month.

Amongst them is the Afternoon Tea Dance at the Memorial Hall to commemorate the 70th anniversary of its opening. This will take place on Saturday 18th July and tickets are just £5. It is sure to be a lovely afternoon.

We have an update from the school on their fantastic art project that lots of the children have been involved with. We also have a report on swifts, with lots of advice on how you can help our summer visitors to thrive.

In this month's Parish Council Sketch, information is shared about the response they have received from Westmorland and Furness Council about speed and traffic calming measures. Read the full article for details, but in summary, it is unlikely that will do anything in the short term to address our issues. BN have been in touch with the new Chief Executive of W&FC with questions about this, and about the proposed changes to school transport. At the time of printing, we have yet to have a response, but we will inform you of her comments when we get them.

Please would readers note that letters & articles must include a valid name & address. This can be with-held from publication on request. We will not publish any anonymous letters, or material which, in the opinion of the Editorial Committee, is of an offensive or defamatory nature. BN reserves the right to edit letters & articles in the interests of magazine space.

In the meantime, it might need residents to take on the issue of traffic ourselves. You will have seen many surrounding villages have home made signs warning drivers to slow down and take more care. I'm sure we have many talented artists in the village who could produce their own guerilla signs, and put them up on the main road. Why wait for the council when we can start to take action ourselves?

On this point, it has also been mentioned that villagers could take more care over the way they park in the village, particularly on junctions. The highway code states that vehicles should not be parked within 10 metres of a junction, and not opposite one either. At BN towers we are fully aware that parking is an issue, with many properties without their own dedicated parking space. We do have a big car park behind the King's Arms that is currently available to use, which many are taking advantage of, and this could be an option for some.

Please also be considerate when parking on pavements. Many pedestrians struggle to pass these parked cars, especially if they have a wheelchair or pushchair.

Some residents have raised concern about the felling of some trees on land near the MUGA. The Sports Committee have explained that this was necessary work on the trees and will be looking to replant other more suitable species to replace them. In the near future they will be asking residents for suggestions as to what they can plant. BN would like to suggest that fruit trees are planted that residents could help themselves to when ripe.

There is a community orchard in Grange-over-Sands and it would be a lovely addition to our village to have something similar here.

We would also like to take this opportunity to congratulate local rugby player Georgia Wilson who for the second year running captained Wigan to the the Rugby League Challenge cup trophy. It was an even more dominant victory than last year. Well done Georgia!

On the subject of sport, the Football World Cup is well under way. Hopefully by the time you read this England are still in the tournament. Good luck to our cover star Harry and the team. I'm sure when they get their copy of Burton News, this extra encouragement will help them take the final step in bringing it home. We will surely take the credit if it works.

Stuart East
Editor

BURTON VILLAGE STORE - NORMAL OPENING HOURS

Monday - Friday

Shop: 6am - 8:30pm

Post Office : 9am - 5.30pm

Saturday

Shop: 6am to 8:30pm

Post Office: 9am to 12:30pm

Sunday

Shop: 7am - 8pm

Post Office: Closed

The views expressed within Burton News are not necessarily the views of the Editors or the Editorial Committee
--

BURTON WOMEN'S INSTITUTE

Our June meeting proved to be another great success as we enjoyed a very informative talk from Jasmin Hall, a talented stylist from Renes in Lancaster. After a very short meeting, the wine flowed accompanied by various cheeses and biscuits as Jasmin gave us great insight into how to dress effectively. Raucous laughter followed as brave members put themselves in the spotlight. On July 9th we look forward to hearing how Hattie Crabtree took to creating goods made from leather to battle an illness. It will be a fascinating evening so come and join us at 7.30 at BMH; guests are always very welcome.



Come and join us on the 2nd Thursday of each month.

Contact Jan Clarkson 07974 412458 for more info.

HOLME AND BURTON MOTHER'S UNION

On June 2nd members shared an epic 'Canadian Road Trip' with local Holme resident Mr. Dave Critchley who has visited Canada many times from 1975 to 2024. Dave illustrated his talk with numerous stunning photographs and fascinating facts about the history and geographical features of Canada. Highlights of the trips included Waterton Lakes National Park, the Grass Hills of Montana, Red Rock Canyon, the fruit growing areas of British Columbia and numerous sites around Calgary. Many thanks to Dave for sharing his vast Canadian experiences with the group.

The annual 'Strawberry Tea' with a raffle & tombola will take place on Saturday July 4th in the Ellen Turner Room at 2:00 p.m. Tickets are £3-50 from M.U. members or pay at the door. Everyone Welcome!

The annual outing is on Tuesday August 4th with a visit to 'Carnforth Heritage Museum' at Carnforth railway station. Members who wish to travel by bus need to catch the 9:45 a.m. bus from Holme and 9:52 a.m. from Burton. Coffee, drinks, snacks & lunch may be purchased from the 'Buffet Restaurant'.

No regular meeting in July & August & the next meeting is on Tuesday September 1st.

Judith Fisher (Secretary)

Burton-in-Kendal Art and Craft Society For Demonstrations, Exhibitions, Talks and Workshops

The Art Group meet most Friday mornings 9.30 am - 12 noon BMH
£3 per session for Members. Visitors £5.

The Craft Group meet on the Second Monday of the Month
1.30 - 4.00 pm BMH £3 per session



To join the Society contact our Treasurer, Paula Firth
tel: 01524 571997 mob : 07488 328464 email p.c.firth@hotmail.com

Chair - Rosie McLaughlan mob: 07904 157021 rosie27659@yahoo.com

Membership includes a free programme of events, free art and craft entries to
the Exhibition and use of the Society Library.

Follow us on Facebook : Burton in Kendal Art & Craft Society

Burton Fellwalkers

Burton Fellwalkers aim to do three walks each month,
except in December, when we have one festive outing.

New walkers are always welcome and we offer a range of walk
grades. Contact our secretary Dave Clarkson via the website
<https://fellwalkers.burton.org.uk> or on 07939 006466



July Walks

Sun 5 July 13.00 start at BMH Tour of Rusland Heights 6.5 miles Moderate

Sat 11 July 08.30 start at BMH Norber Boulders from Austwick 8 miles Moderate

Wed 15 July 10.30 start at BMH Ribblehead to Horton Train walk with meal 6.5
miles Moderate

Wed 22 July 18.30 start at BHM River Bela geology walk 5 miles Easy

Sat 25 July 09.00 start at BMH Carrock Fell & High Pike 7 miles Hard

Burton, Holme, and District Local History Society

Monday 20th July

Tour of Appleby 2pm
Members Only

A full programme is available on the website
www.localhistory.burtonweb.org.uk

Contact: Chairman Peter Williams.

Tel. 01524 807927 email peterjohnwilliams@sky.com

Programme Co-Ordinator Matthew Scott

Tel. 01524 936501 email burtonholmehistorysoc@gmail.com

New members welcome.



News from Burton Memorial Hall

The Hall AGM on 9th June saw most of the existing committee and officers re-elected for another year, apart from Viv Preston who stood down as a committee member, and with the recent loss of Bob Parker we are down on numbers. We have had one person express an interest in joining the Hall committee since the AGM, and would welcome other new members, in particular to help with running the online booking system and handling social media, but even if those aren't your area of expertise please contact me if you are interested.

This month we are hosting the first of our 70th Hall Birthday events: the 1950s Afternoon Tea Dance on Saturday 18th July 2pm-5pm, with the wonderful singer Rachel Mercer performing for us. There will be refreshments on sale, and an afternoon of wonderful music - you can either dance or sit and enjoy it - tickets are still available from me directly (07906 661110) or when I'm in the Hall on Wednesdays (12.30-3pm and 6.30-8.30pm) or Fridays (12.30pm - 2pm). They are £5 each. Do come along and celebrate our community building's 70th Birthday with us!

The mid-monthly coffee morning is a week later this month, on Saturday 25th July, 10am until 11.30am, where we'll have our delicious homemade cakes on sale again. Also Kingsharp will be back with us in the car park to sharpen your blunt things from 10am until 12noon. Again, do come along and join us - all proceeds go to help keeping the Hall going.

Anne Nichols
Chair of the Management Committee

RUGBY SUCCESS FOR GEORGIA WILSON

Wigan Warriors retained the Women's Challenge Cup as they scored 10 tries to thrash rivals St Helens in a clinical performance at Wembley.

Denis Betts' side reigned supreme in a 42-6 victory one year ago, but this was an even better performance as they took control through Georgia Wilson's early try and never looked back.

Betts' side were once again sublime with the ball and dominated the match, leaving St Helens with very little to do but watch them race in time and again.

Yet it was not just Wigan's brilliance that was the story of the game - St Helens were simply outmatched. Saints had won this competition four times in a row leading up to Wigan's first-ever win in a final last year, yet that era has ended with a resounding thud.

Wigan carved them open with ease. If 2025's thrashing of Saints and subsequent treble was Wigan announcing themselves in the women's game, this clinical performance was a marker that the game has changed.

BURTON MEMORIAL HALL 200 CLUB

Results of May 2026 Draw as follows:

FIRST PRIZE;	£32	J. MULHEARN
SECOND PRIZE;	£20	ART & CRAFT SOCIETY
THIRD PRIZE;	£12	L. JACKSON

Anyone wishing to join the 200 Club,
please contact Katy Worsley on bmh200club@outlook.com
Or call 07946 617634

Cost £12 per number for a year (12 draws)

Why not buy a year's subscription to the 200 Club for £12 as a birthday gift for a family member or friend? If you already have a number, why not buy another and increase your chances of a win?



Burton Lunch Club

Held at the Royal Oak, Burton every 2nd

Wednesday of the month. Come along and enjoy a

reasonably priced two course meal with tea or coffee in a friendly environment.

Please call Age UKSC to book on 01539 728118.

Age UKSC Information is available at the Coffee Morning and Book Drop on the 1st Monday of the month in the BMH 10am – 11am

Burton Book Drop & Coffee Mornings



Monday 6th July



Burton Book Drop Coffee morning is held in BMH on the first Monday in every month (unless its a bank holiday) from 10:00 to 11:00. All proceeds go to help the upkeep of the Hall. This is an opportunity to come and have a coffee, cake and a chat, buy a second hand book and use our Book Drop. The Book Drop is a community library service provided by Westmorland & Furness Council but manned by village volunteers.

Elevate your home

- Completely bespoke service
- Free survey & quotation
- Made-to-measure curtains
- Wooden shutters
- Window film application
- Conservatory blinds and automation specialists

Full range of blinds:

- roller
- vertical
- venetian
- Velux
- roman



Contact Information

SILVERDALE

01524 702111

sales@portabello.net

Portabello Blinds & Curtains

Bringing 20 years of dedicated craftsmanship to your windows

Portabello Blinds Interior Decor and Garden Pods

Your local company offering exceptional personal service and where quality and Courtesy come as standard



Portabello Blinds & Curtains Ltd are pleased to announce the launch of their new website.

<https://portabelloblinds.myshopify.com>

Information, advice and interior ideas all in one place

- Purchase a range of Luxury cushions directly through our website
- Stylish, durable and beautifully crafted garden pods



Please call on 01524 702111 to arrange your no obligation appointment
Email Jdcportabelloenquiries@gmail.com <https://portabelloblinds.myshopify.com>

SWIFT REPORT

Swifts returned to Burton a few weeks ago now – with the first arrival being spotted right at the start of May. Since the first bird arrived the numbers have increased steadily. Villagers are bound to have seen and heard swifts flying fast nearby, with their distinctive ‘scream’ calls ringing out above locations such as the Royal Oak, the village shop, and the church. These remarkable birds migrate to the UK each Summer to breed. They spend almost all their life on the wing, landing only to lay eggs and tend their chicks in the nest. Unlike swallows and martins, they do not perch, they even sleep on the wing! Swifts usually lay their eggs in late May or early June, and the chicks hatch after 2 to 3 weeks.

Swifts are endangered, with UK recorded numbers falling by over 60% since the mid 1990’s. Nationwide, great efforts are being made to stop the decline. Each year since 2013 a number of individuals in Burton have made observations of the numbers of swifts flying in the village skies and kept a log of the nesting sites seen in use. In past years up to 40 birds were seen at one time (July 2018), and over 20 nesting sites in logged as in use over the season (2019). Since these ‘peak’ years some village nesting sites have been lost due to building renovations. Thankfully, others have been preserved, or created, by sensitive building approaches. Graham Wilson ensured that historical nest holes were kept at the Royal Oak as part of the refurbishment. He also created swift nest holes in the houses at Oak Court behind the Royal. Quite a few are already in use. Separately, South Lakes Housing agreed to install swift ‘bricks’ in some properties in the new houses at Meadow Close; although we have not seen swifts nest in these yet.

2025 saw the first use of a temporary multiple nesting box unit placed behind a set of louvres in the bell tower of St James’ Church. The unit is put in place without harming the tower structure in early May and removed after the swifts migrate South in August. This year two of the nesting places appear to be in use – with other birds also flying in and out to explore it. Well done to all concerned in getting approval for the use of the unit and managing the installation. It is good to know there is a new nesting option for these amazing birds.

July is a key month for our observations. Nest use is hopefully more easily observed as adults return regularly to nests to feed their young. We are always happy to welcome new observers on our ‘swift walks’. This year they are usually on a Tuesday evening – starting at the Memorial Hall between 8pm and 8.30pm (depending on sunset time). We can also provide more information about options for preserving existing nest holes in properties or adding new nesting facilities using swift bricks or boxes. If you would like to know more about Burton’s swifts please email bikswiftgroup@gmail.com or comment on the ‘Burton-In-Kendal Swifts’ Facebook page (<https://www.facebook.com/groups/1233727520761809/>)



Pint-Sized Pundits and Pickleball Prowess!

The quiet of our local courts was delightfully shattered yesterday when Year 3 pupils from Moorwood Primary School descended upon our pickleball group. Visiting as part of their Arts in the Community project, these mini-spectators brought maximum energy.

Our players took to the court to showcase their finest dinks, drives, and volleys. The children proved to be world-class cheerleaders, raising the roof with every rally.

Once the dust settled, the kids grilled our players with a barrage of highly insightful questions. Move over Wimbledon—we are confident we have officially inspired the next generation of village pickleball wizards!

By Annette Sayers 07936434026



Burton in Kendal Bowling Club - Home Fixtures					
July 2026				Time	League
Weds 1 July 2026	Burton in Kendal A	v	Skerton B	7pm	Morecambe League Div 1
Tues 7 July 2026	Burton in Kendal A	v	Netherfield A	7pm	Kendal League Div 1
Weds 8 July 2026	Burton in Kendal B	v	Ship A	7pm	Morecambe League Div 4
Thurs 9 July 2026	Burton in Kendal	v	Warton A	2pm	Vets League Div 1
Tues 14 July 2026	Burton in Kendal B	v	Staveley A	7pm	Kendal League Div 1
Weds 15 July 2026	Burton in Kendal A	v	Bowling Green A	7pm	Morecambe League Div 1
Tues 21 July 2026	Burton in Kendal A	v	Windermere A	7pm	Kendal League Div 1
Weds 22 July 2026	Burton in Kendal B	v	Bare C	7pm	Morecambe League Div 4
Tues 28 July 2026	Burton in Kendal B	v	Milnthorpe A	7pm	Kendal League Div 1
Come along and support your local team					



Burton-in-Kendal TENNIS CLUB



Summer Season

Our Summer Season started in April and we are hoping for some spells of dry weather to enjoy the great outdoors on our lovely courts. We want to encourage as many people as possible to join us, so we have reduced our adult annual subscription fee to just £30! Note our coaching sessions and open afternoons below and do come along.



Coaching

Coaching for juniors and adults will commence on **Sunday 12th July** with professional coach Michael Cartmell. Juniors 9 - 10am and adults 10 - 11am. For more details see the coaching page on our website: www.burtontennisclub.co.uk

Open Afternoon Saturday 15th August 1 - 4pm

We'll be there to offer advice, assistance and all the equipment you need (apart from a pair of trainers!). Refreshments will be provided. If you can't make those dates try dropping in at one of our social tennis sessions below.

Social Tennis

Friday 10 - 11:30am, Sunday 2 - 3:30pm
Weather permitting!

Contact

For more information visit our Website, Facebook page or email: info@burtontennisclub.co.uk
website: www.burtontennisclub.co.uk

PARISH COUNCIL SKETCH

Residents may have noticed recently outside the church that there has been a temporary speed indicator device. Mandy Coleman, or PCSO has confirmed it had been placed by the police. They will feedback their results in due course. Speed watch volunteers have only been out once so far, but are hoping to be out again before the summer. Mandy is worried that there are no zig zags outside the school, and so this will be looked into.

No questions from the public in the open forum. However, your intrepid reporter wanted to know if the Parish Council could answer the following question: 'Is it coming home?' The view of most of the Council was that this was the wrong sport, in particular the shape of the ball was not appropriate. However, it was noted that England had made a good start to the tournament, which gives us some hope.

District Cllr Hughes reported that she had given a tour of the village to the Chief Executive of Westmorland and District Council, Miranda Cannon. She met with representatives of a number of groups from the village at the Memorial Hall to listen to resident's views, and to understand some of the problems facing our community. One of the pressing matters is the issue of school transport and the proposed changes. Cllr Hughes is not happy with the current proposal and is trying to encourage the council to reconsider due to the negative impact that this will have on ordinary families in the village.

No correspondence has been received in regards to either of the planning proposals discussed this month. The Parish Council will therefore make no objections or comments. However, there are changes being made to planning applications. In future, any proposals that are in line with the Local Development Plan, will not go to the planning committee for discussion. Therefore the discussions of what is in the local plan will be much more important, as it will be more difficult to challenge this in the future.

Several complaints have been made about pot holes near Plain Quarry. The Parish Council have agreed to fund the repairs upto a total value of £250.

An inspection report has been received on the playground. Some pieces of equipment require repair. Westmorland and Furness Council have listed this as a priority. In the meantime the Parish Council will be requesting some quotes to repair the pieces of equipment rated moderate. They will then make a decision as to which ones they will fund the repairs of.

In other news...work is ongoing to formalise the footpath link from Meadow close to Boon Town. The footpath down to the square from this point is due to be repaired in September, which should make it much more accessible. The work on 19 Trees is still ongoing. The pointing work on Market Cross still needs to be done. There is still a casual vacancy on the Parish Council. The quarry liaison group met for the first time since 2018. It was noted that the volume of quarrying work had dropped by half over recent years.

A letter was read out that had been received by the Parish Council that had been sent by Traffic Management Manager at highways department at Westmorland and Furness Council. In the letter, they stated that they have been to the village to monitor traffic, and have studied data on accidents in the village. Because there have been no recorded accidents in the village, and cars were mostly observant of the speed limits where measured, the Highways Department do not currently see any need to make any changes to either the speed limit, or any road safety measures.

It appears that unless the group of villagers who are campaigning to get a 20mph limit across the village are successful in their application, then nothing will be changing in the immediate future. BN have written to the new Chief Executive of W&F Council to ask her to review this due to residents concerns.

The next meeting is Thursday 16th July 2026 at 7.30pm at the Memorial Hall.

Songbook Concert is a Summer Treat

Once again the Burton Singers treated their audience to a fun and varied night out at their summer concert, with music spanning many eras and genres.

From a rather unusual madrigal treatment of the Spice Girls to the choir going full Texas Hold 'Em with a Beyonce song, there was never a dull moment.

And as ever, the raffle was a glittering clutch of prizes thank to the wrapping talents of Sarah Lyall. (That's wrapping not rapping - we haven't managed to get her onstage in all these years.) Money raised will go to two local charities - Burton Morewood School and The Outlook Trust. Big thanks from the choir to everyone who turned out to support it.

Extra Broken Chords show in Silverdale

A massive thank you to everyone who supported our gig-theatre production over the last couple of months. It was so gratifying to share our story with you and hear some of yours. As almost all of the shows sold out, we have scheduled an extra performance in Silverdale on July 3rd. Tickets are available online at <https://www.ticketsource.com/brokenchords>. Find out what audiences and reviewers have said about Broken Chords here: <https://www.brokenchords.art>

Kirstie and Stuart

BURTON MOREWOOD SCHOOL REPORT

Burton Morewood School – Intergenerational Community Art Project

We are very fortunate to be in receipt of a funded arts project that involves our children and those within the community.

Here is an update from Nicki Smith (Artist and Project Co-ordinator):

The Kendal Windows on Art (KWoA) 'Midway' intergenerational community project children's activities at Burton Morewood Primary School are off to a great start this summer term!

The project title comes from Burton-in-Kendal being 'midway' between Kendal and Lancaster but also rurally located, bypassed by the motorway. It also links to the idea of 'meeting midway' e.g. developing a creative dialogue across different generations in the local community, with the hope of building empathy skills and being more aware of the needs of older people in the community.

There are creative opportunities for community members to share their interests, memories and stories with their older and younger neighbours so that everyone feels valued.

The children are enjoying a range of creative workshops run by KWoA artists including: exploring local history about how Burton-in-Kendal developed in the past to designing and building models of our 'Dream Houses' for a future Burton-in-Kendal. They have thoroughly enjoyed hands-on mark-making with movement, using paint and enthusiasm and have carefully been drawing pencil portraits of older visitors in school. The children have been discussing their 'favourite things' with older residents at Elmsfield House and built Lego landmarks in school as well.

Thanks to all our older project volunteers for their support of, and interest in, the children's activities, which is greatly appreciated.

The children are also going to be exploring how we move or travel through Burton-in-Kendal; creatively using print techniques and they will also be visiting Pickleball activities at the Memorial Hall! Following such a positive response from older visitors at the Preloved Wardrobe Vintage Fair event at the hall back in October, their fashion memories through the decades are going to be inspiring the children's new mini 'outfit artworks'. The children are also going to design visual communications to update the community about project progress.

We are looking forward to sharing the children's wide range of artworks inspired by our older neighbours' interests in community exhibitions, later in the KWoA Midway project.



BURTON-IN-KENDAL ART & CRAFT SOCIETY

Our **ANNUAL GENERAL MEETING** will be held on Monday 27 July 2026 at 7.30pm in Burton Memorial Hall.



We are proud to welcome Bob Sutcliffe, OBE, as our Speaker. Bob is the Founder and Patron of The Creative Health Trust. This unique Charity offers Grants to Hospices, funding creative therapies and improving wellbeing when it matters most. I'm sure Bob will be bringing along a stock of his cards and other fundraising items for sale.

Put the date in your diaries. We hope you will come along to find out more and help us to support this amazing Charity, and as with all Burton events, there will be the mandatory supplies of tea and cake!

WE LISTEN. YOU HEAR.



Enjoy your summer to the full!

Make sure your ears and hearing are holiday ready with Lakeland Hearing

Hearing Assessments • Hearing Aids • Ear Wax Removal • Tinnitus • Noise Protection

☎ 01539 234180 ✉ info@lakelandhearing.co.uk
🌐 lakelandhearing.co.uk (online booking available)
📍 Suites 2-4 Helm Bank, A65 Burton Road, Kendal LA9 7PS



Quintessentially

Dear Friends

What makes England England?

Evensong?

I doubt that was your first answer but maybe it would have appeared in a longer list of our nation's valued features and traditions.

The English service of 'Evening Prayer' goes back to the 16th Century and the Book of Common Prayer crafted by Archbishop Thomas Cranmer but based on earlier Latin services. The service can be 'said' without music but in 'Evensong' the timeless words of the service and readings from the Bible are interspersed with psalms, canticles and hymns set to beautiful music.

In the hope that such services will once again be a regular and much-loved feature of our villages we are initially arranging two services of Evensong in the peaceful setting of St James Church Burton at 6pm on two summer evenings: Sunday 19th July and Sunday 16th August.

In 'Choral Evensong' virtually all the singing is by a choir while the congregation mostly listen. But our services of 'Sung Evensong' will give more opportunity for you to join in with well-known hymns with the choir singing some pieces too.

So, this is a warm invitation to you to step away from your busy life for a while and come to our 'Village Evensong'. All ages are welcome, including children. Come and sing, or come to listen. The services will last around 45 minutes. No need to book or pay. No dress code. There is a small amount of parking in the church car park at Burton for those who need it – just drive through the churchyard gates. But if you can walk down from the village that will be helpful.

If you are interested in singing in the choir for either of these services please text or ring Ali Burrows on 07741 458587. There will be two choir practices on Tuesday evenings for each service.

"Evensong's long evolution brings with it a powerful sense of connecting present with past, of tapping into something much greater than ourselves."

Sincerely

Graham Burrows



July 2026 Services

Sunday 5 July

11am Morning Worship with Communion

Sunday 12 July

11am Morning Worship

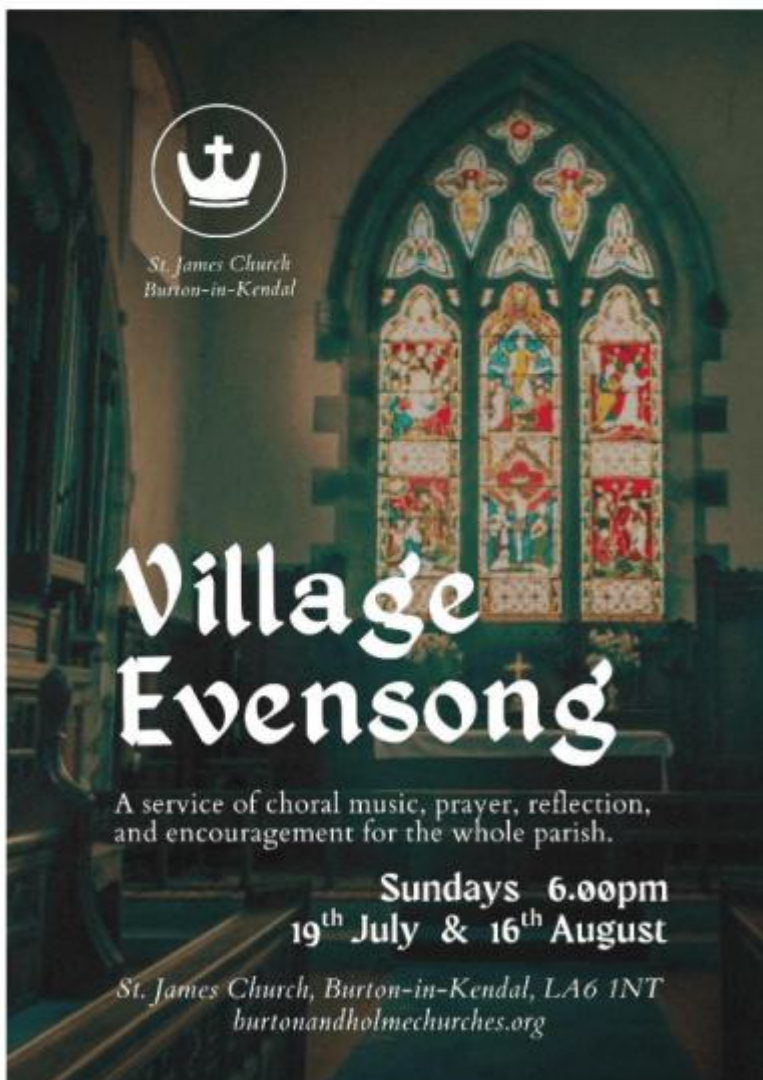
Sunday 19 July


11am Morning Worship with Communion

6pm Village Evensong

Sunday 26 July

10.30am Joint **First Steps** Service in Holme,
followed by Bring & Share lunch




*St. James Church
Burton-in-Kendal*

Village Evensong

A service of choral music, prayer, reflection,
and encouragement for the whole parish.

Sundays 6.00pm
19th July & 16th August

St. James Church, Burton-in-Kendal, LA6 1NT
burtonandholmechurches.org

St James Church, Burton

Vicar

Graham Burrows

St James Vicarage, Glebe Close,
Burton

01524 781210 07740 622962

vicar@burtonandholmechurches.org

Wardens

Mark Bennigsen

Ali Burrows

Administrator

Pat Whalley 01524 782296

admin@burtonandholmechurches.org

The church is open to visitors every Friday and Saturday, 10am – 4pm. You are welcome to look around or to use the quiet to think or pray.

We are very willing to talk about weddings, baptisms (christenings), confirmation, funerals and interments. Please contact us.

OTHER PLACES OF WORSHIP

Silverdale Methodist Church LA5 0RR, Rev. Rev Linda Catlow 07787 829921

St Mary's RC Church, Yealand Conyers, Father Peter Haughton 01524 732940
Times of Services can be found at www.ololcarnforth.org.uk

Warton Methodist Church, www.wartonmethodist.co.uk, 07787 829921 Rev
Linda Catlow.

Yealand Quakers, 01524 781501 / 782052 / 732336

Preston Patrick Church, Junction 36 (The Church on the hill with the Cross)
Morning Worship 9.30am

Warm
Welcome
Wednesdays



Enjoy a hot drinks in a warm & comfortable room.
Chat with others, play a game, read a book, do a
jigsaw, bring your knitting, or surf the internet!

Every Wednesday
12.30pm-3pm at Burton Memorial Hall

HOT FOOD (at 1pm) & HOT DRINKS (all afternoon)
CHAT :: GAMES :: FREE WI-FI :: JIGSAW LIBRARY



Kindly funded by
Westmorland & Furness Council
& private donations



IT'S A DATE IN BURTON - KATH HAYHURST

Some interesting burials in Burton:

1833: James Kelly, infant twin sons

1838: Lancelot Clarke - Clawthorpe aged 60 years

1839: John Cocking - aged 76

1845: Margaret Morewood - infant, Burton Vicarage, the only child of Rev. Morewood

1846: Robert Dobson, Infant, burned to death

1846: Hannah Amer aged 10, accidentally shot by her brother

1846: William McDonald, aged 67 traveller who died at the lodging house

1846: Richard Arthurs, aged 37, died of cholera, Private in the 4th Dragoon Guards

1852: Thomas Greenup, Holme, aged 30, murdered according to coroner

Why not join us? Come along on the first Monday of the Month, meet up with friends and enjoy the music, as well as help to raise funds for local causes (Burton News, Burton Memorial Hall and Burton Morewood School Playground Equipment)



BURTON'S BOP

Monday 6 July 2026

(thereafter every 1st Monday of the Month)

2.00 pm - 3.00 pm

Burton-in-Kendal Memorial Hall LA6 1NA

£2 per person

Bring your own refreshments

Free Parking

Enquiries to Jan 07479 524524



Burton Bop starting Monday 1st June 2.00 til 3.00 at Burton Memorial Hall! Thought your dancing days were over but still got some moves; love a bit of Elvis to tap your feet to; want to Twist and Shout? Then come along to the daytime disco, 1st Monday of the month. £2.00 a session and all profits will go to Burton News, Burton Memorial Hall and Burton Morewood school playground equipment.

For more details contact Jan Abbott 07479 524524 janabbott9553@gmail.com

CALLING ALL BURTON PARENTS, TEENS & KIDS!

LET'S BUILD THE VILLAGE YOU WANT TO SEE.

OUR VILLAGE
OUR VOICE
OUR FUTURE

WE ALREADY HAVE SOME GREAT STUFF ON OUR DOORSTEP!

Like open access to the primary school grounds

And activities at Burton Memorial Hall—

TABLE TENNIS (8+) **PICKLEBALL SESSIONS (16+)**

BUT WE ALSO KNOW THERE ARE AWESOME, UNDER-THE-RADAR GROUPS OUT THERE THAT AREN'T WIDELY ADVERTISED!

If you run or know about a hidden-gem local activity, **SHOUT IT OUT!**

WE WANT TO FILL THE GAPS TOO.

ARE YOU A TEEN LOOKING FOR A HIGH SCHOOL **YOUTH GROUP?**

OR A PARENT SEARCHING FOR A LOCAL **TODDLER GROUP?**

DROP YOUR OPINIONS IN THE COMMENTS!

Tell us about the hidden activities we missed, or what you want to see added!

WANT TO SHARE IDEAS PRIVATELY? SHOOT ME AN EMAIL AT: burtonnewsyouthrep@gmail.com

Shakespeare in the Garden at Leighton Hall

Thursday 23rd July

Leighton Hall, Carnforth, LA5 9ST

Early bird tickets available at www.leightonhall.co.uk

Adult £19 / Child £11
On the gate £21 / £13

Open Air – Rain or Shine! Bring your own seat, a blanket or warm clothes.

Grounds open for picnics at 6:00pm
Play starts at 7:00pm

(Please note earlier show time than previous years)

THE COMEDY OF ERRORS

1950s

Afternoon TEA DANCE



★ SATURDAY 18th JULY 2026

★ 2pm - 5pm

★ at Burton Memorial Hall

★ TICKETS £5*

★ Call 01524 781306
or 07906 661 110

PRIZE FOR
BEST 1950s OUTFIT!



Music by *Rachel Mercer* (singer)

* Ticket includes entry, music and dancing. Food and refreshments available to buy.



Burton Singers

A community choir based in Burton.
If you would like to join us then please contact
Val Still on 07799 246415



Burton Tennis Club

Welcomes new members www.burtontennisclub.co.uk
Social tennis / league matches
Enquiries - contact Jane tel. 07799105639
Or graham@burtontennisclub.co.uk



Fusion Fitness

Thursday 9.30 to 10.30 Burton Memorial Hall
Seated class Thursday 10.45 to 11.15
Contact Jan Abbott Mob: 07479524524
Email: janabbott9553@gmail.com



Burton Bowling Club

Club night each Monday at 6.30pm at green during season. Enquiries to Sue Miles 01524 781465



Ladies Badminton

Every Tuesday in Burton Memorial Hall 1.30pm to 2.30pm
If you would like to join please contact Sue Humphreys
01524 781596, or just turn up! £2 per session



Burton Amateur Dramatic Society

If you would like to join us either Acting or Back Stage please contact
Secretary. Jill Evans 007704514972



Burton Fellwalkers

At least 3 walks a month of different grades. New members always welcome. To join please contact our secretary Dave Clarkson 07939 006466 Website; <http://fellwalkers.burton.org.uk>



Milnthorpe Angling Association

Fly fishing on the River Bela & environs. For membership information please contact: John McKay, tel 07704 265953 e-mail milnthorpeaa@hotmail.com



Table Tennis Club

Adults & Juniors meetings at Burton Memorial Hall
Thursday evenings - Autumn to Spring each year
Enquiries to Martin on 07740 933463.



Circuit Training + HIT

Mon 6.15pm Burton Memorial Hall
Thurs 6.15pm Burton Morewood School
Contact: John 01524 781707 or 07712686298



Scottish Country Dance Group

Meets at Storth Village Hall on Tuesdays from 7.00pm. Beginners welcome. Contact Rosanne Sagar on 07791 545560, or Pauline Hampson on 07706 697306, paulinehampson2016@gmail.com



Burton in Kendal Art & Craft Society

Craft Group 2nd Monday of the month 1.30pm. Art Group Fridays 9.30am -12pm. Workshop or Demonstrations most months
Pres: kathhayhurst84@gmail.com Tel 01524 781613
<http://burton-in-kendalartandcraft.weebly.com/>



Burton, Holme & District Local History Society

A year round programme of interesting talks & visits
Chair: Peter Williams Secretary: Matthew Scott
Contact via burtonholmehistorysoc@gmail.com
<http://localhistory.burtonweb.org.uk>



Burton Womens Institute

Meetings held at Burton Memorial Hall on 2nd Thursday each month (except August).
To join contact Jan Shepherd on 07974 412458



Burton Knit & Natter

Every Wednesday BMH Club Room - 6.30pm until 8.30pm. Open to anyone to bring along knitting, crochet, tatting, embroidery etc. or help in making postbox toppers or village yarn bombing. Cost is just £2.00 per person per week incl. tea/coffee and cake.



Pickleball

Pickleball is a great way to exercise, have fun and meet new friends. We run a number of sessions throughout the week at various times to suit all. All sessions at Burton Memorial Hall £2 per hour.

Jeanie Christian (07967 940818) runs sessions on a Monday 9.30am-11.00am, 11am-12pm and 7.30pm-9.00pm, and Fridays 9.30am -11.00am. There is now a waiting list for these sessions. Sarah East (07779994914) runs a session Thursday evening 7.15pm-8.15pm for experienced players only. Annette Sayers (07936434026) runs sessions Tuesdays from 9.30am-11.30am Wednesdays from 2.30pm-4.30pm. In all cases please contact the relevant person first.

Call for Advertisers

Do you run a company offering services to residents of Burton? If so, would you like to advertise with us? If you get this newsletter then you know it is distributed each month (except Jan) to all households in Burton, Dalton and Clawthorpe.

Our rates are very reasonable, starting at £66 for a 1/8th page advert running for 11 editions (we produce 11 editions each calendar year). You do not have to run your advertisement for a full year but just for those months that are most appropriate to your business. If you do take a full year's subscription then, as an introductory offer, we will double the size of your advert for the first month.

Please contact the editors on burtonnewseditor@gmail.com for advice and full information about our charges and advertising size formats.

MORECAMBE BAY FOODBANK

We are still collecting for the Morecambe Bay Foodbank, if you have anything you would like to donate please would you pop them into one of the collection boxes at 4 Drovers Way. Thank you on behalf of those who are in need of your help

Milnthorpe Library

19 The Square, Milnthorpe LA7 7QJ

Monday: 2pm to 6pm

Wednesday: 2pm to 6pm

Friday: 10am to 1pm & 2pm to 5pm

Saturday: 10am to 12.30pm

Telephone 015395 63040.



We are still expanding this community led project, if you would like to know more about this project please email b4rn4burton@gmail.com.

Mike Iddon & Martin Sansby.
Burton-in-Kendal B4RN Champions

Useful Phone Numbers

Burton Post Office	01524 781828
Morewood School	01524 781627
Burton Nursery	01524 781627
Dallam School	015395 65165
QES, Kirkby Lonsdale	015242 71275
CrimeStoppers	0800 555 111
Police non-emergency	101
Kendal Library	01539 713524
Kendal Hospital	01539 732288
Lancaster Hospital	01524 65944

Council Switchboard

Westmorland & Furness 0300 373 3300

Annual Gift Subscriptions

If you know of anyone who may like to receive BN regularly each month, why not buy them an Annual Gift Subscription? For £15 within the UK they will receive a copy of BN each month (11 copies per year). A great way for family, friends and former residents to keep in touch with what's happening here in Burton. Interested? email burtonnewseditor@gmail.com.

Burton in Kendal Parish Council

Meetings

3rd Thursday of every month at 7.30pm
Members of the public are always welcome to observe. Each meetings includes an OPEN FORUM.

Planning applications:

Parishioners are asked to ensure they notify the PC as well as the planning authority of any comments or objections they have about any planning application within the parish.

Website:

Documents relating to the PC may be downloaded or read online here: www.burton-in-kendal-pc.gov.uk

For further information, contact:

The Clerk - Christine Davidson on 01524 782694

Next Meeting:

The next Parish Council Meeting will be on Thursday 16th July, 7.30pm BMH

OUT OF HOURS PHARMACY SERVICE

Ash Trees Pharmacy

Market Street, Carnforth

Monday to Friday 8am to 10pm

Saturday 9am to 6.30pm

Sunday 9am to 6pm

Tel: 01524 727877 - Fax: 01524 730421

Burton-in-Kendal Voluntary Car Scheme

If you need transport to hospital, doctor, dentist, optician etc please contact Lynne Herd on 01524 781905. The scheme is still operating but has a reduced number of drivers so if you can spare some time as a driver you would be most welcome. Please contact Lynne for details.

Recycling Information

Customer Services Desk on
0300 373 3300
or by email to:

customer.services3@westmorlandandfurness.gov.uk

Waste Collection Dates

[https://
www.westmorlandandfurness.gov.uk/
bins-recycling-and-street-cleaning/
waste-collection-schedule](https://www.westmorlandandfurness.gov.uk/bins-recycling-and-street-cleaning/waste-collection-schedule)

Civil Registration Services Births, Marriages, Deaths

Registration of Births and Deaths is overseen by the Kendal Registrar's Office, based in County Hall, Kendal. Telephone 0300 373 3300 or email registration.service@westmorlandandfurness.gov.uk

Registrations may also be undertaken at Milnthorpe and Kirkby Lonsdale Libraries by appointment only, contact the Kendal Office to arrange an appointment. To arrange a marriage contact the Kendal Registrar. Opening times Mon - Fri, 9.00am to 4.30pm.

Council Highways Hotline
0300 373 3306

to report road, lighting or pavement

HELPLINES & LINKS

BULLYING: 0300 323 016

www.nationalbullyinghelpline.co.uk (at work, school, online)

www.kidscape.org.uk (childhood)

CHILDLINE: 0800 1111 (under 18's)

NSPCC: 0808 800 5000

www.nspcc.org.uk (children at risk)

SAMARITANS: 116 123

www.samaritans.org

SHELTER: 0808 800 4444

england.shelter.org.uk/ (homelessness)

STONEWALL: 0800 050 2020

www.stonewall.org.uk (LGBT+)

BURTON VILLAGE STORE - NORMAL OPENING HOURS

Monday - Friday

Shop: 6am - 8:30pm

Post Office : 9am - 5.30pm

Saturday

Shop: 6am to 8:30pm

Post Office: 9am to 12:30pm

Sunday

Shop: 7am - 8pm

Post Office: Closed

01524 781828



**You can contact Vicky Hughes as follows:
Westmorland & Furness Council:**

Burtlands

Station Lane

Burton-in-Kendal, Cumbria, LA6 1HR

Tel: 07785 923940

email:

Vicky.Hughes@westmorlandandfurness.gov.uk

Burton Memorial Hall

COFFEE & CAKE

MORNING

in aid of Hall funds

Saturday 25th July
10am - 11.30am



plus



Tool, Knife & Scissor Sharpening
by Kingsharp in the car park
10am-12noon

Burton Memorial Hall is a charity registered in England & Wales, no. 505018

Flexibility Aerobic blast Balance
FUSION FITNESS
Mindfulness Fun Strength and stability



Burton Memorial Hall

Thursdays 9.25 to 10.25

**Looking forward to seeing you there!!
[please bring a mat]**

Call or email for more information:

Jan Abbott

Mobile: 07479 524524

Home: 01524 782429

Email: janabbott9553@gmail.com

**Garnett's Gardening
and Handyman Services**

Local • Friendly • Reliable

07527201501

www.facebook.com/garnettsgardening



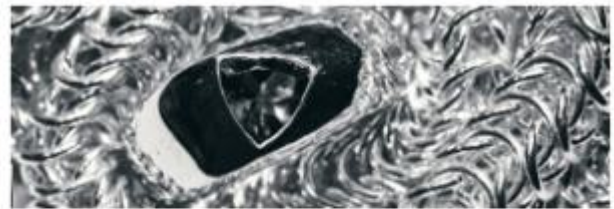
**Lawns, Hedges, Maintenance, Clearances
and much more... We've got you covered!**

CAT SITTING

Going on holiday and need someone to look after your cat in it's own home.
Look no further than Burton Cat Sitters.

- One visit per day £7.50
- Two visits per day £15.00
- Fully insured and DBS checked

Call Alli Watts on
07984128473 for
more information.



Martin Ives Craftman Jeweller

In Burton, bespoke jewellery in Silver, Gold, Palladium, and Platinum.

Wholly new or old/broken jewellery restyled into something new.

Jewellery repairs.

Email: ives.jewellery@outlook.com

Web: not yet

Phone: 07446 831926

I occasionally stream making jewellery at
https://www.twitch.tv/bald_engineer

SEE YOUR BUSINESS HERE!

CONTACT BURTONNEWSEditor@GMAIL.COM

FOR INFO

Barton Tech Support

For all your computer needs

Desktops supplied / built to order /
upgraded / repaired

Laptops supplied / upgraded / repaired
Peripherals supplied / repaired if possible

Networks (wireless & ethernet)

Call Barry on 01524 781306
Email: bts@yobunny.co.uk

Goad Joinery Ltd

All aspects of joinery including:

Renovation, Doors, Windows, Sky Lights, Flooring
Extensions, Fitted Kitchens, Fencing
Barge Boards & Soffits, Garage Doors
Loft Conversions etc

Trusted Time-Served Joiner

Call for a free estimate, no obligation

Burton in Kendal 01524 782939

freedom DRIVING SCHOOL

Pass first time
or receive free lessons until you pass

Call Richard on
07990 506431

Holme Works Handyman

Nobody likes doing homework so let
Holme Works do it for you!

All Household & Garden work undertaken:

Household: Painting - internal & external work;
Gutters - cleaning, painting & repairs;
Pressure washing - walls, pathways, paving, decks
& fencing;
General household repairs (non structural); Flat-
pack assembly.

Give Neil a call on 01524 782177 / 07712 475863

PURE ESSENCE

beauty spa

SKIN EXPERTS

Pure Essence Beauty
Owned by Sue Shields
Your local haven for relaxation,
Skincare & Selfcare
South Lakeland Leisure Village
01524 735240

Burton Mobile Valeting Cumbria

Full vehicle Valeting

Maintenance Valeting available

Fully Insured
Contact details
Mobile 07359628002

Email
burtonmobilevaleting@gmail.com

Suzanna Peart
DYSLEXIA SERVICES



Member of
AMBDA and
current APC.

Providing diagnostic dyslexia assessments with
professionalism, warmth and approachability.

Practicing primary
school teacher with over
20 years experience.

Professional
indemnity insurance.
Enhanced DBS.

07736 281 329
suzannapeart@btinternet.com



Tammi Upton
(formerly Birkbeck)



**Experienced stylist offering high quality:
Cuts, Colours, and Styling.**

Enjoy a luxurious, feel-good experience
in my beautiful private salon in Over Kellet.



Book your appointment today!
07766 007779

Also Tropic Skin Care Ambassador

DAVID LEWTHWAITE

Painter and Decorator

Over 40 years' experience
No radios, no rollers, no fuss
Fully insured

8 Hollowrayne, B-in-K

01524 782512



THE FAIRBANK SOCIETY

Fairbank, Kirkby Lonsdale. LA6 2BD
Supported Living for
Older, Independent, People

For information contact
Janet Farrington - 015242 71077
manager@fairbanksociety.com
www.fairbanksociety.com

Catananche Gardens

Garden maintenance and
design services

RHS-trained gardener

Available in Burton and the
surrounding area
M: 07803 107758

WESTMORLAND PAWS

Dog Walking & Pet Services

Burton-in-Kendal and surrounding areas

Fully insured and DBS checked
Canine First-Aid trained



07834 994 972

westmorlandpaws@gmail.com

 Westmorland Paws

 westmorlandpaws



Septic Tank Specialists

015242 72842

High pressure drain jetting
Septic tank emptying
CCTV surveying
Installations
Treatment plant servicing
Home buyers & sellers
surveys

www.parkstanks.co.uk info@parkstanks.co.uk

Carpets & Hard Flooring Supplied & Expertly Fitted by

Jonny Holmes

07796 010141



*Please call for advice and a
convenient
choose at home service.*

DALTON WOODLAND BURIAL GROUND

Natural Woodland Burial Ground

"Return to the Earth, naturally"

www.daltonwoodlandburial.co.uk
Burton-in-Kendal: 01524 782442

Northern Woods Tree Services

Tree care
Woodland management
Vegetation control
Mobile sawmill and timber processing
Firewood and sawn timber

Tel: 07891246047

email:

northernwoodstreeservices@gmail.com
www.northernwoods.co.uk

Jan's Pantry

Mobile Outside Catering for all Occasions
Barbecues • Weddings • Christenings • Parties etc.

A fully qualified cook at your fingertips



For enquiries call
01524 781904 or
07855 202124

*Your Celebration Cakes
can be done too*

DALTON self storage

- Indoor containerised storage
- Easy Access
- Well Lit
- Secure

Tel. 01524 782442
Burton-in-Kendal

Hartland House (Abbeyfield)

Milnthorpe - Residential Care Home

For more info please ring: 015395 62251 or
email: abbeyfield@hartlandhouse.co.uk
www.hartlandhouse.co.uk

31 en-suite rooms
24 hour staff cover
Home Cooked Meals
Entertainment &
Activities



 **RJM JOINERY**
AND INSTALLATIONS LTD
EST. 2002
BUILDING • CONVERSIONS • RENOVATIONS

Specialists in loft conversions & dormers
Extensions & traditional roofing work
All types of building projects
Phone: 07896 425460
Web: www.rjmjoineryandbuilding.co.uk

TUTORING

Do you require a tutor to help your Primary School child achieve their best? I can offer one-to-one sessions to boost confidence and improve standards in English and Maths.

I also have an excellent pass rate for 11+ coaching.

I'm looking forward to making plans with you.

Ring Kay on: 07787 482593

NEIL HAWES

CARPENTRY AND JOINERY SERVICES



ESTABLISHED 1994

ALL JOINERY, CARPENTRY AND GLAZING
WORK UNDERTAKEN

OFFICE 01524 749277
MOBILE 07790 736605

Sewing Alterations and Repairs in Burton



Jill Nicholson
07929383474
Email: jill@nichpjm.co.uk

Dalton Hall
Business Centre
Burton-in-Kendal

Meeting Room Hire

All Enquiries 07881 930139
offices@daltonhall.co.uk
<http://www.daltonhall.co.uk>



Mike Hurtley

☎ : 07858506177
✉ : mhyelectrical@gmail.com
🌐 : mhyelectrical.com
f : mhyelectrical

Testing & inspection
Part & full rewires
Replacement light fittings
Replacement sockets & showers
Fuse Board replacements
Maintenance & fault finding
Free no obligation quotes



MILNE MOSER

SALES + LETTINGS

Offering award winning estate agency services in the South Lakes.

Contact us for a free, no obligation market appraisal of your home.

KENDAL OFFICE

015395 725582

kendalproperty@milnemoser.co.uk

MILNTHORPE OFFICE

015395 64600

milnthorpeproperty@milnemoser.co.uk

In house solicitor's for smooth conveyancing, including a 10% discount on legal fees if you sell your home with us.



VELUX Certified Installer



RDC Joinery
ALL ASPECTS OF JOINERY

☎ 07812024303 ✉ rdcjoinery23@hotmail.com



“Helping you and your feet go a long way”

Comprehensive professional, friendly and effective chiropody & podiatry services. Expert help in our welcoming treatment room, conveniently situated in Carnforth

- Routine footcare & hygiene issues
- Long term health conditions
- Resolving pain and posture problems
- Nail surgery

Web: www.carnforthchiropodist.co.uk

Mobile: 07725 300290

Email:

carol@carnforthchiropodist.co.uk

Address: 28 Langdale Road,
Carnforth, LA5 9AU

Calendar of Events

JULY

Art Group - meets most Fridays 9.30am-12 Noon - BMH (Visitors welcome) £3

Craft Group - Second Monday each month 1.30pm- 4pm - BMH £3

Knit and Natter Group - meets each Wednesday 6.30pm to 8.30pm - BMH £2

Warm Wednesdays - 12.30pm - BMH

Line Dancing Every Friday - 12.30-2.00pm - BMH

Burton Bop 1st Monday every month (starting June) 2-3pm - BMH

Baby and Toddler Group every Tuesday 9.15-10.45am - Burton Morewood School

Lunch Saver Menu – Tuesday & Wednesday (12–3pm) Royal Oak
Enjoy 3 delicious courses for just £16.95 from our lunchtime saver menu—an offer too good to miss! Booking is recommended but not essential.

Sing & Sup at The Smithy Inn on the 2nd Sunday of each month. All genres of acoustic song and music 8.00 to 11.00 Free supper. All welcome to listen or play

Sun 5th - Fell Walkers - Rusland Height - 1pm BMH

Mon 6th - Book Drop and Coffee Morning - 10-11am - BMH

Mon 6th - Burton's Bop - 2-3pm - BMH

Sat 11th - Fell Walkers - Austwick - 8.30am (meet at BMH)

Wed 15th - Fell Walkers - Ribbleshead - 10.30am BMH

Thurs 16th - Parish Council Meeting - 7.30pm - BMH

Sat 18th - Afternoon Tea Dance 2-5pm - BMH

Sun 19th - Evensong - St James' Church - 6pm

Mon 20th - Burton and Holme District Local History Society - Appleby - 2pm
(Members only)

Wed 22nd - Fell Walkers - River Bela - 6.30pm (meet at BMH)

Sat 25th - Coffee Morning - 10am - BMH

Sat 25th - Fell Walkers - Carrock Fell - 9am (meet BMH)

Mon 27th - Art and Craft society AGM - 7.30pm - BMH